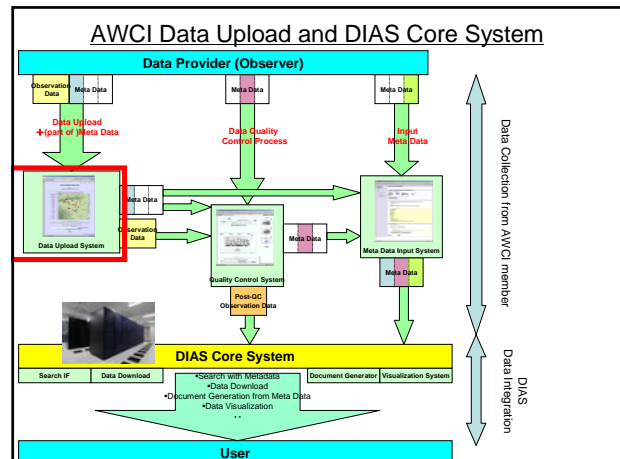


AWCI Observation Data Upload System

Eiji Ikoma
Katsunori Tamagawa, Hiroko Kinutani,
Tetsu Ohta, Toshio Koike, Masaru Kitsuregawa



AWCI Data Upload System

- Observers can upload observation data and input some Metadata on Web Interface consisted of 4 steps.
- Easy Operation and Quick Response.
- This system has some function which reduce the complicatedness of upload process

Login Page



- Username and Password are required.
- Each observation site manager has its own (unique) username and password.

STEP1



- Observation Point(Map/List)
- Time Period
- Data Interval
- Timezone
- Description (optional)
- Num. of observed elements

STEP2



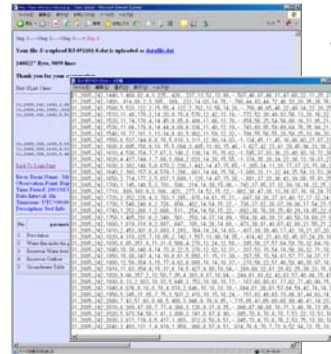
- Observation Data
 - Choose from pulldown menu
 - Sensor height
 - Orientation(op.)
 - Unit
 - Missing value
 - Description(op.)
1. Copy from No.1 to all
 2. Unit = Input Automatically when you choose observation data
 3. Copy from former inputted data
 4. Modify the num of observation data
 5. Upload from prepared csv file

STEP3



- Upload observation Data(File).
- Confirmation of metadata inputted at STEP1,2.

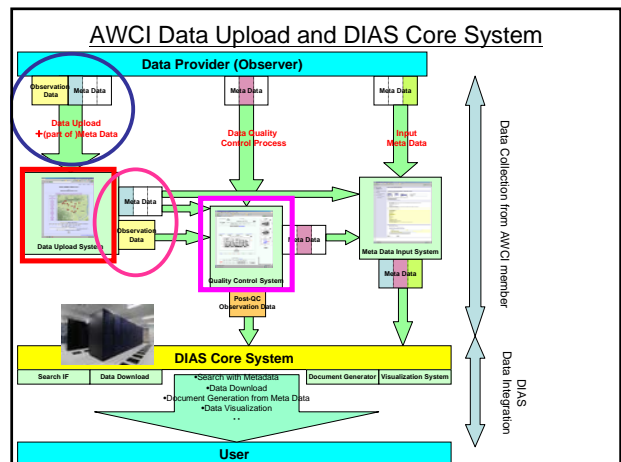
STEP 4



- Confirmation of
 - local path of uploaded file
 - contents of the file (first/last 3lines and all lines when you require)
 - All metadata inputted at STEP1,2,3

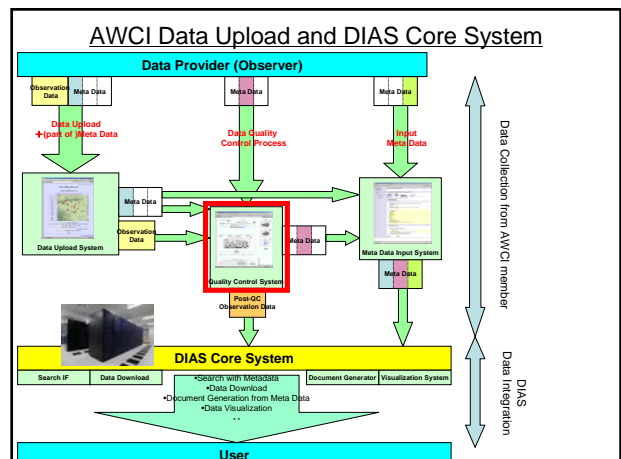
After STEP 4

- Our system send the confirmation message to observer by e-mail.
- Inputted metadata are stored in our Upload system --- Observer can use at next time.
- Observation data is loaded to Quality Control System



Data Quality Control(QC) System

Eiji Ikoma
Katsunori Tamagawa, Tetsu Ohta,
Kenji Taniguchi, Toshio Koike, Masaru Kitsuregawa



Our QC System

- First version of our QC System was developed for CEOP Data in 2004.
- Ver.1(2004-2005) for → Ver.2(2005-2006) → Ver.3(2007-)
- 13site(Ver.1)→ 25site(Ver.2)→Ver.3
- We are preparing QC-V3 system for AWCI Data Management.

Features of our QC system

- Web-based UI (required only Web browser)
- Easy-to-use and light operation
- Data management mechanism for each user authority
- Post-QC Data download support system
- Progress Management system for Data Manager

