

## AWCI Data Quality Control System intended for different observed interval

Eiji Ikoma  
Katsunori Tamagawa, Tetsu Ohta  
Toshio Koike, Masaru Kitsuregawa

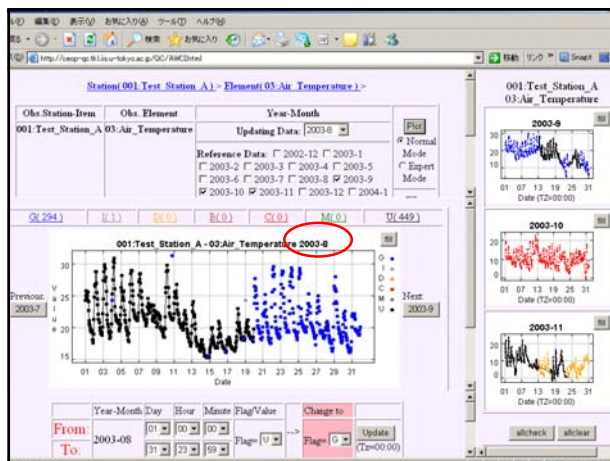
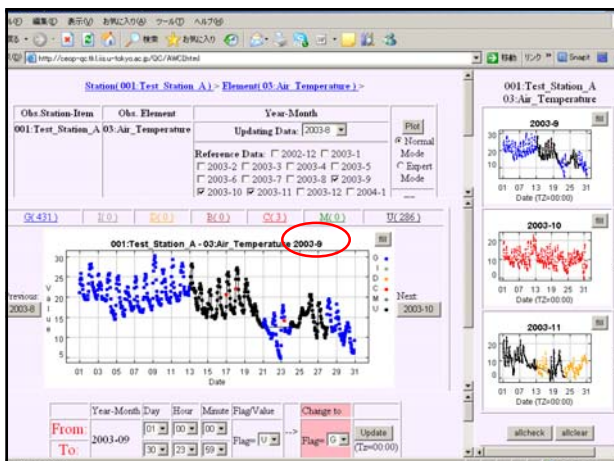
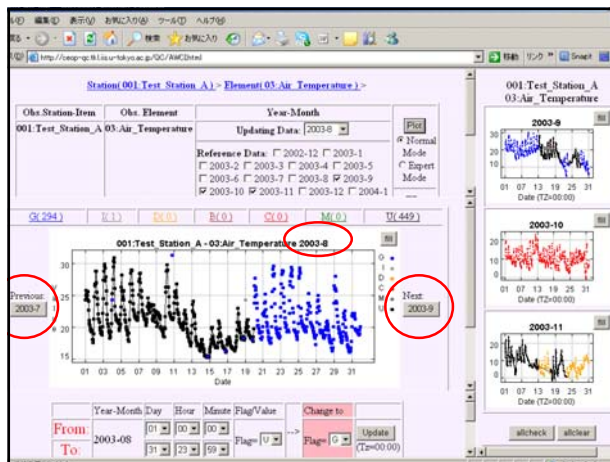
The University of Tokyo

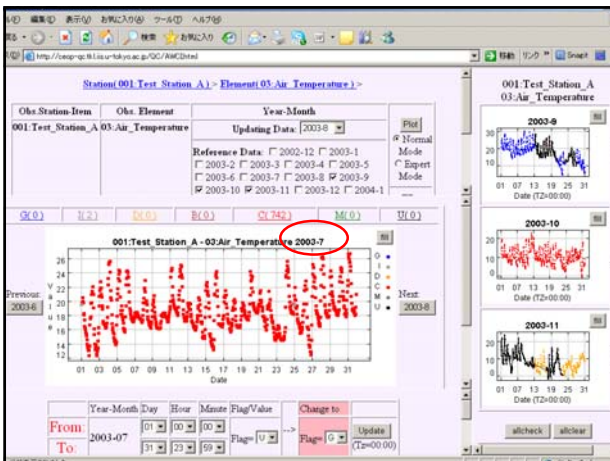
## AWCI-QC System Ver3.03a and more...

- Ver3.03a is now running, 16 sites's data are loaded and open to each observer.
- New 2 functions are available from Ver3.03a based on user's request.
  - Move to Next/Previous time period
  - Generate Time series graph from select window directly
- 1 more function targeting for monthly and daily data are now developing
  - Handling observation data in a year unit

## Move to Next/Previous time period

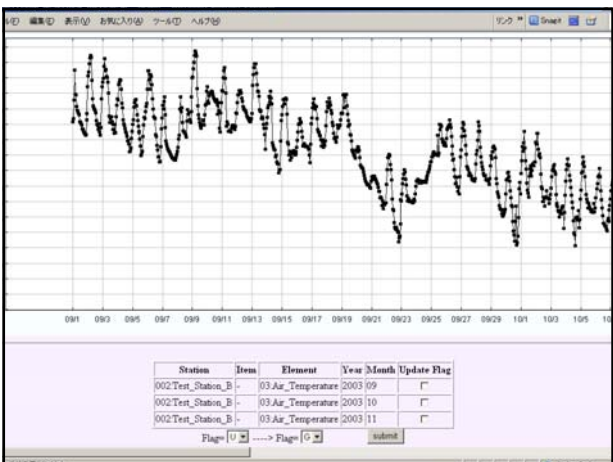
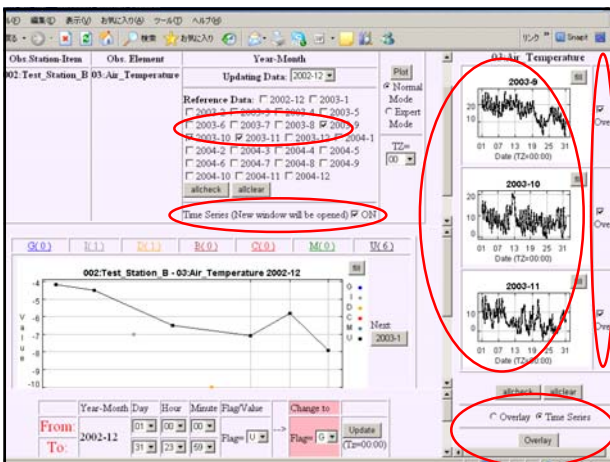
- On Graph window, "Next" and "Previous" button are added.
- Users can move to next/previout time period by clicking this button.
- If you reach to the end/first of the observation term, no button are displayed.





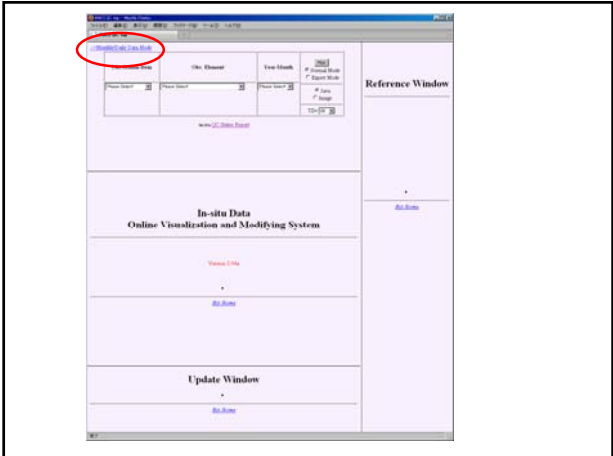
Generate Time series graph from select window directly

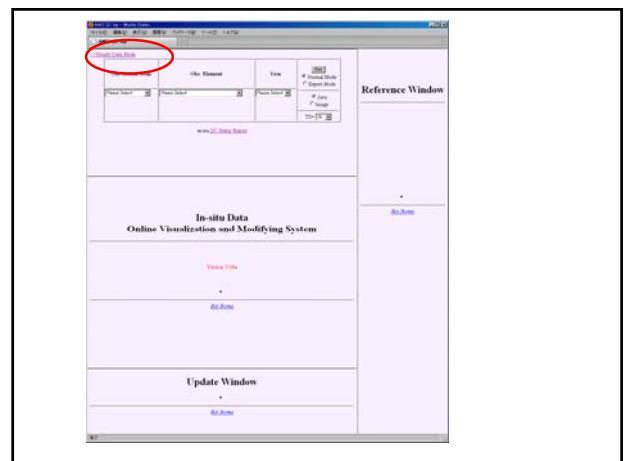
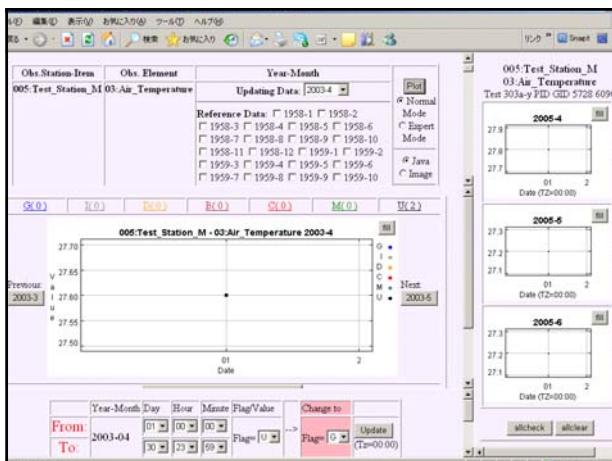
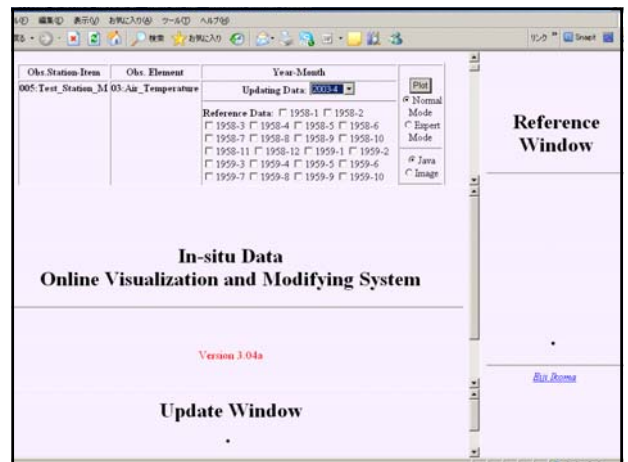
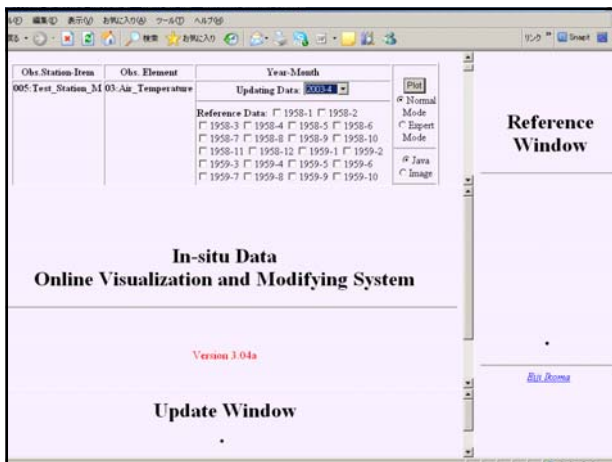
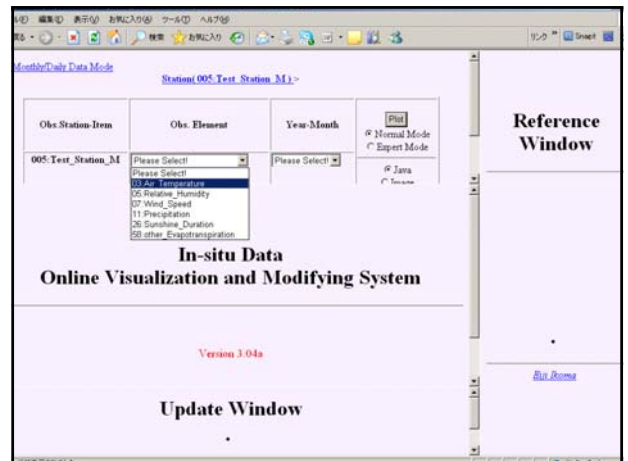
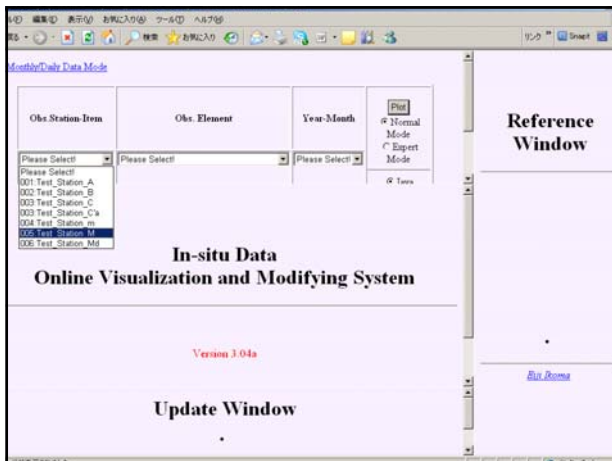
- On select window, New check box “Time Series” is available.
- If user check here, time series graph is displayed without operating on reference window.

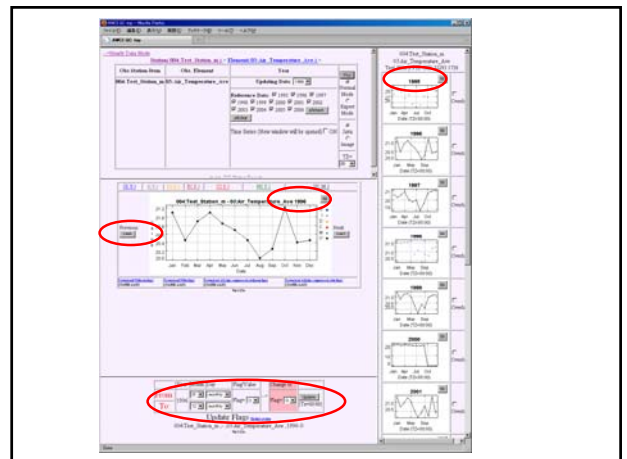
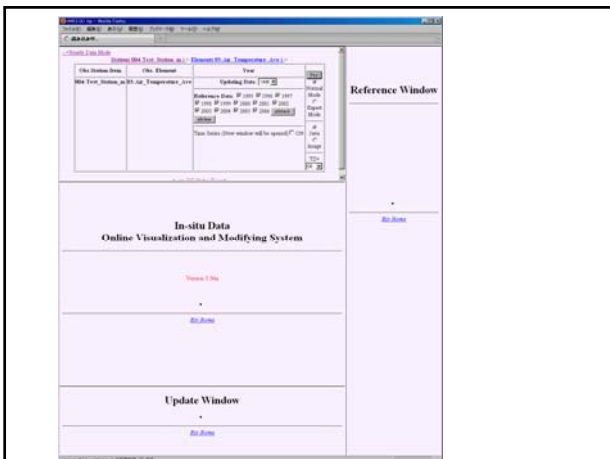
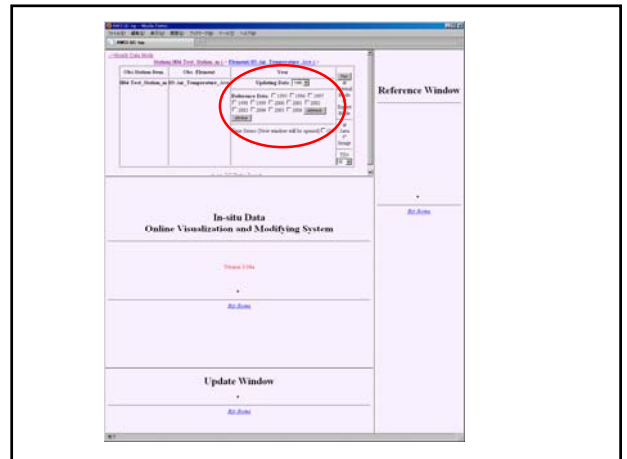
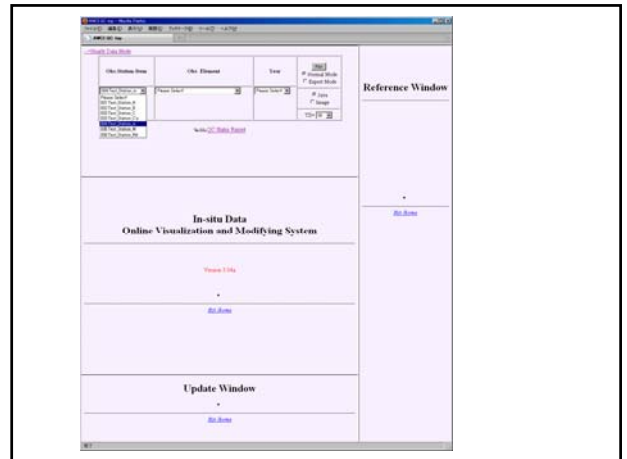
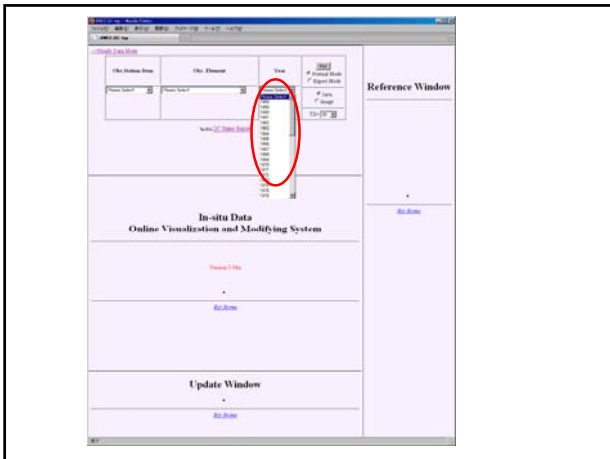


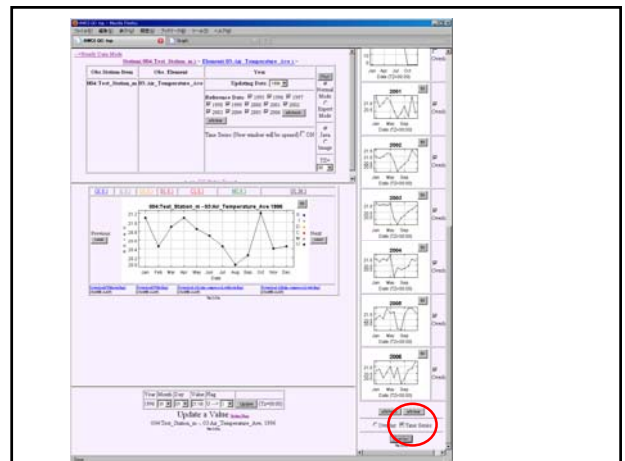
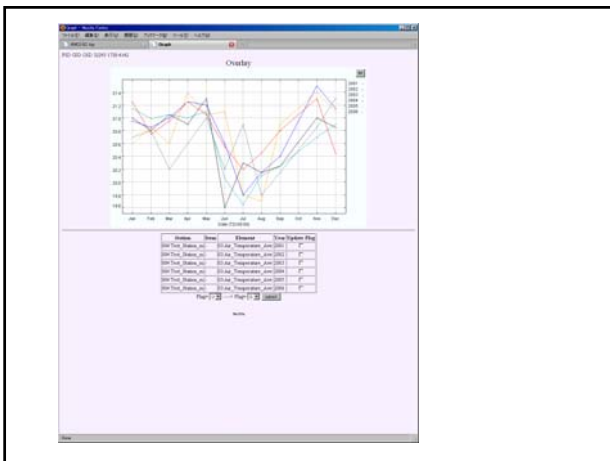
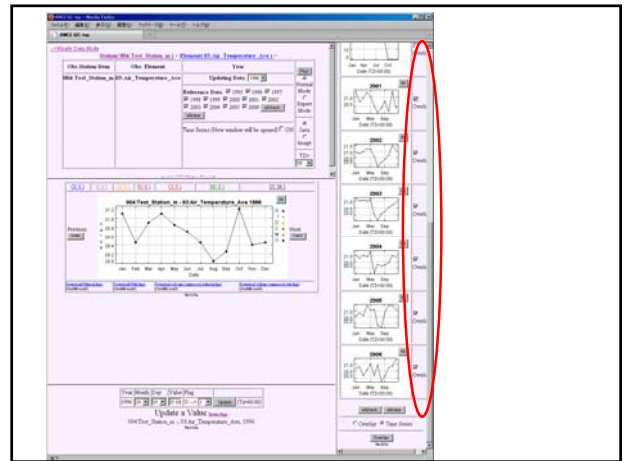
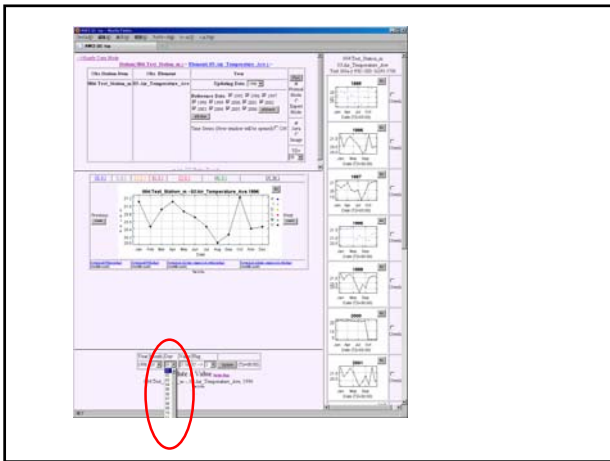
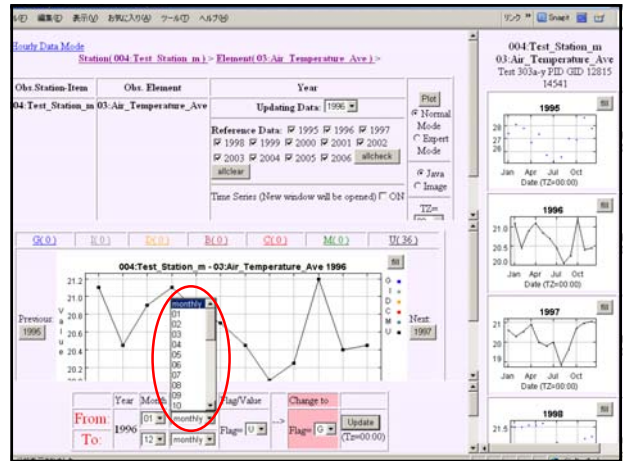
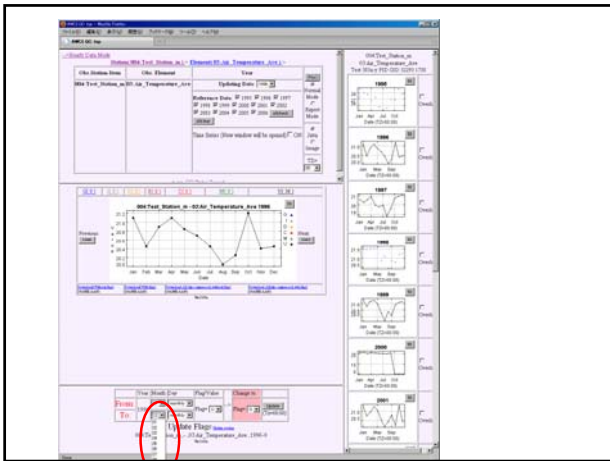
Development New function for Ver3.04  
- for monthly / daily data

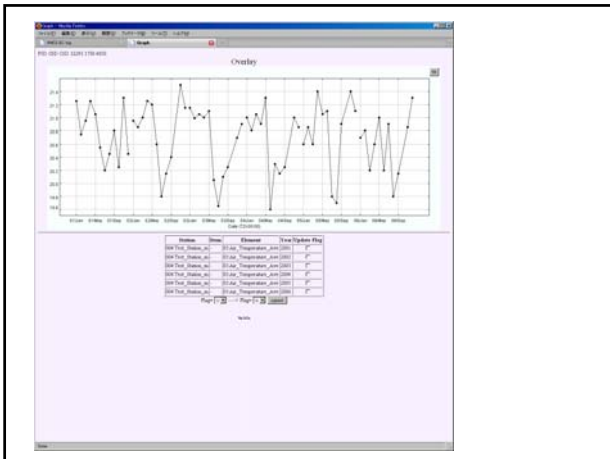
- Latest version-ver3.03a can handle data per 1 month = it was targeting for the data of every hour when we start to develop.
- However, some data is “monthly” or “few times per month”, so it is not easy to process QC using this version.
- So, we start to develop new version which can handle monthly or (few days) daily data.
- This version is still **under development**, but I receive lots of requests, so I explain this new version today.











## Summary

- 2 functions = [Next/Previous] and [Time series graph] are already opened on Ver3.03a.
- Monthly/Daily data mode is still under development, however, if you are interested in this function and want to use as soon as possible, please contact to Mr.Tamagawa. We can open test-version of Ver3.04a, you can try it.